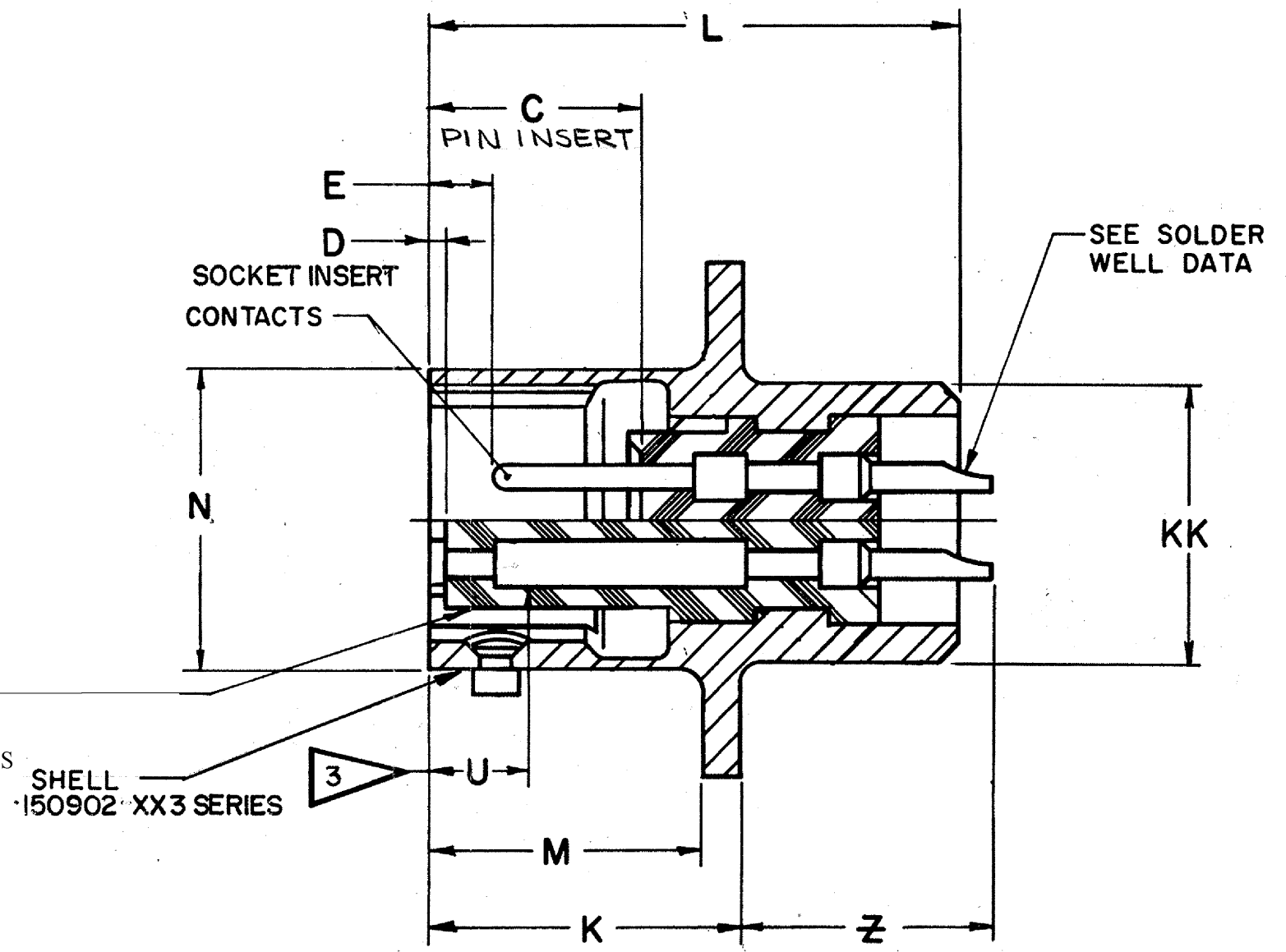
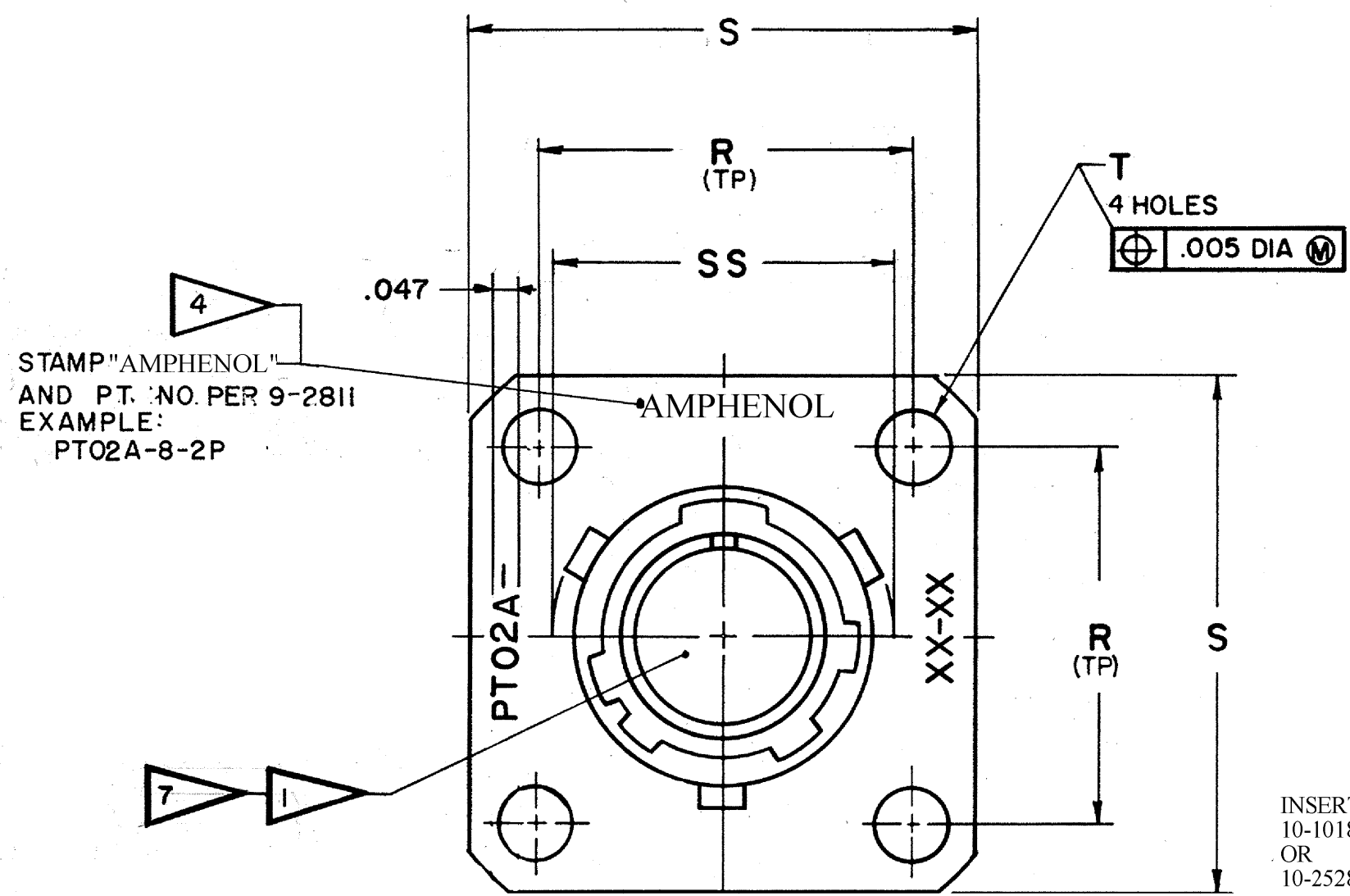


REL NO. 32508-147		REVISIONS		
CHG NO.	SYM	DESCRIPTION	DATE	APPROVED
45525-218	A1	REDRAWN SAME SIZE; REV. DATA (MFG)	9-10-65	<i>Harrison</i>
45525-1135	A2	STANDARDIZED	8-12-66	<i>B. Roman</i>
54525-85	A3	WAS E PIN INSERT; ADD. PIN INSERT (C)	1-10-73	<i>Randall</i>
98879	B	(CL II) ADDED 10-252806/824-XX3 SERIES TO INSERT IDENTIFICATION NOTE	12-2-06	JONES



ACCESSORIES
(NOT PART OF STANDARD ASSEMBLY)

SEE DRAWING
10-150000

USE OF THIS DOCUMENT IS UNLIMITED. DOCUMENTS REFERENCED HEREON CONTAIN LIMITED RIGHTS DATA.

ITEM NO.	QTY REQD	DESCRIPTION	PART NUMBER	CODE IDENT	ZONE	NEXT ASSEMBLY
PARTS LIST						
UNLESS OTHERWISE SPECIFIED			DRAWN: NICHOLS DATE: 1-11-57		THE Bendix CORPORATION SCINTILLA DIVISION SIDNEY, NEW YORK, U.S.A.	
LINEAR DIMENSIONS ARE IN INCHES. TOLERANCES: 3 PLACES ±.010; 2 PLACES ±.03; 1 PLACE ±.1; ANGLES ±2°. OTHER STANDARDS PER SCINTILLA SPEC 9-3800 AND MIL-STD 8.			CHECKED: <i>Keelon</i> DATE: 10-28-65			
MATERIAL SPEC			MATERIAL:			
PROCESS SPEC SEE SHEET 2			STANDARDS: <i>J. Balantei</i> 10-29-65			
			DRAFTING: <i>Dweet</i> 10-29-65 A.H.		TITLE: CONNECTOR, ELECTRICAL RECEPTACLE, TYPE PT-A ()FB, OLIVE DRAB	
			ENGINEERING: <i>W. W. Harrison</i> 11-1-65			
			DEVELOPMENT: <i>Spence</i> 10-27-65			
		CODE IDENT NO. 77820		SIZE C	71-146206 THRU 71-146250	
SCALE NONE		WT		REF		SHEET 1 OF 2

SEE SHEET 2

NOTES: REF SYMBOL

71-146206/50

ASSEMBLY NUMBER	PT NO.	C +.010 -.025	D +.010 -.025	E +.010 -.020	K +.021 -.010	L ±.031	M +.010 -.000	N DIA +.001 -.005	R (TP)	S +.011 -.010	T DIA ±.005	U MAX	Z +.040 -.050	SS DIA +.000 -.016	KK DIA +.011 -.000
71-146206-	02A-6-	.337	.025	.085	.493	.743	.431	.348	.469	.688	.120	.153	.394	.439	.312
71-146208-	-8-							.473	.594	.812				.563	.438
71-146210-	-10-							.590	.719	.938				.680	.562
71-146212-	-12-							.750	.812	1.031				.859	.688
71-146214-	-14-							.875	.906	1.125				.984	.812
71-146216-	-16-							1.000	.969	1.219				1.108	.938
71-146218-	-18-							1.125	1.062	1.312				1.233	1.062
71-146220-	-20-	.399	.087	.147	.650	.994	.556	1.250	1.156	1.438		.215	.455	1.358	1.188
71-146222-	-22-				.650	.994	.556	1.375	1.250	1.562			.455	1.483	1.312
71-146224-	-24-				.683	1.027	.589	1.500	1.375	1.688	.147		.422	1.610	1.438
71-146225/50		NOT AVAILABLE													

5

- 7. FOR CONTACT ARRANGEMENTS, SEE L-15206/50.
- 6. UNITS ILLUSTRATED MEET THE MATERIAL & FINISH REQUIREMENTS OF MIL-C-26482.
- 5. FOR COMPLETE ASSEMBLY NO. & PT NO., ADD APPLICABLE INSERT ARRANGEMENT SUFFIX TO BASE NUMBERS LISTED ABOVE PER 9-2437-1.
- 4. STAMPING MAY BE ON EITHER SIDE OF FLANGE (ONE SIDE ONLY).
- 3. DISTANCE BETWEEN END OF SHELL & THE POINT AT WHICH A GAGE PIN, HAVING THE SAME BASIC DIAMETER AS THE MATING CONTACT & A SQUARE FACE, ENGAGES SOCKET CONTACT SPRING.
- 2. SEE DRAWING 71-146606/50 FOR REQUIRED MATING PLUG ASSEMBLIES.
- 1. INSERTS & CONTACTS MUST NOT BE REMOVED.

- 10. FOR ASSEMBLY NUMBERS 71-146214-91; 71-146218-80; 71-146218-90; 71-146218-91; 71-146220-90; 71-146222-4; 71-14622-7. SEE INDIVIDUAL DRAWINGS.
- 9. FOR COMPONENT PART NUMBERS OF DESIRED ARRANGEMENT, SEE APPLICABLE PARTS LIST.
- 8. SEE WORK ORDER FOR PERMISSIBLE ADDITIONAL OR ALTERNATE STAMPING.

NOTES: REF SYMBOL

SOLDER WELL DATA		
CONTACT SIZE	20	16
WELL DIA	.046 ^{+0.004} _{-0.000}	.078 ^{+0.004} _{-0.002}
WELL DEPTH	^{+0.031} _{-0.000}	.125 .188

THERMOCOUPLE CONTACT DATA (WHERE APPLICABLE)	
MATERIAL	IDENTIFICATION
CHROMEL	WHITE
ALUMEL	GREEN
IRON	BLACK
CONSTANTAN	YELLOW

ITEM NO.	QTY REQD	DESCRIPTION	PART NUMBER	CODE IDENT	ZONE
PARTS LIST					
UNLESS OTHERWISE SPECIFIED		DRAY NICHOLS	DATE 1-11-57	THE Bendix CORPORATION SCINTILLA DIVISION SIDNEY, NEW YORK, U.S.A.	
LINEAR DIMENSIONS ARE IN INCHES. TOLERANCES: 3 PLACES ±.010; 2 PLACES ±.03; 1 PLACE ±.1; ANGLES ±2°. OTHER STANDARDS PER SCINTILLA SPEC 9-3800 AND MIL-STD 8.		CHECKED: <i>Teelon</i>	DATE: 10-28-65		
MATERIAL SPEC		STANDARDS: <i>J. Balantini 10-29-65</i>	DRAFTING: <i>D. Sweet 10-29-65 A.H.</i>		
PROCESS SPEC TEST 9-3980-2 ASSY 9-3443 9-2437-1		ENGINEERING: <i>W. M. Harrison 11-1-65</i>	DEVELOPMENT: <i>[Signature] 10-27-65</i>		
9-2811				CODE IDENT NO.	SIZE
				77820	C
				71-146206 THRU 71-146250	
		SCALE NONE	WT.	REF.	SHEET 2

71-146206/50