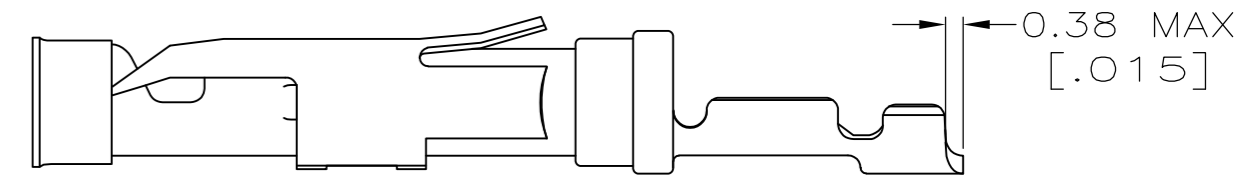
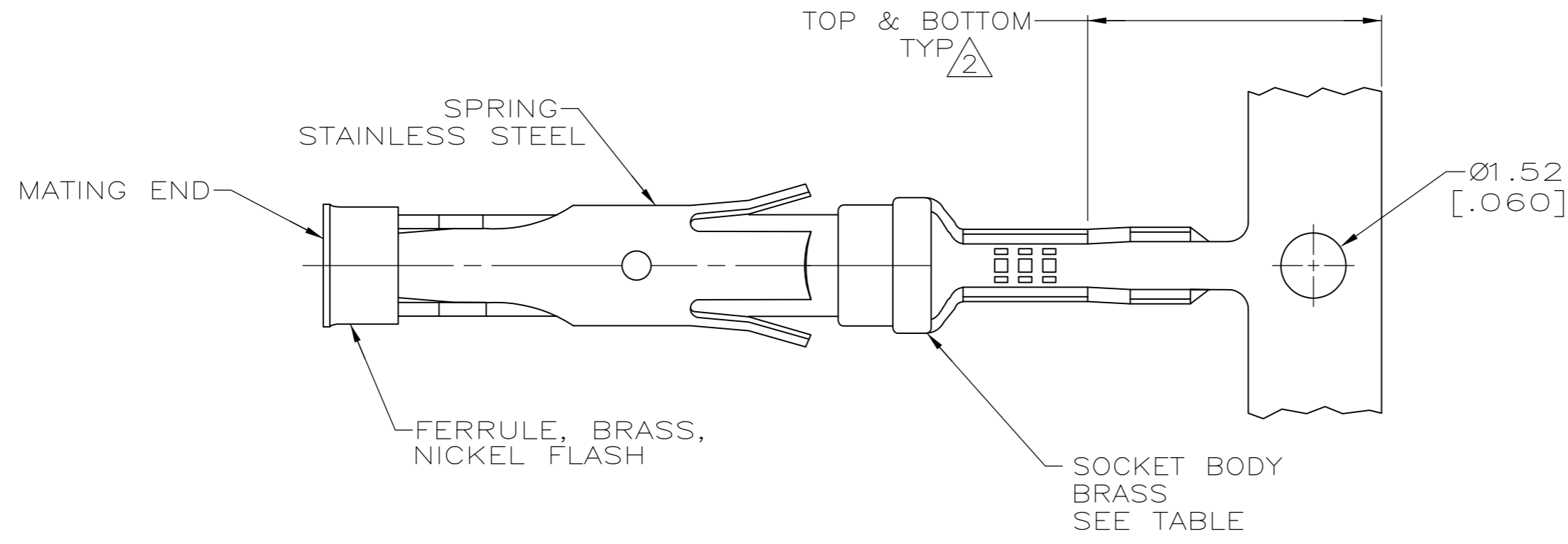
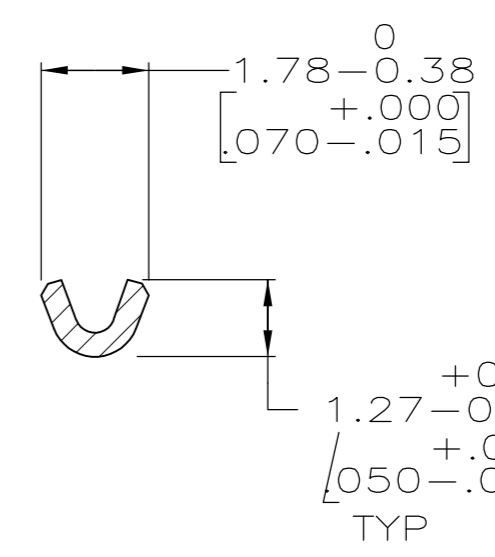
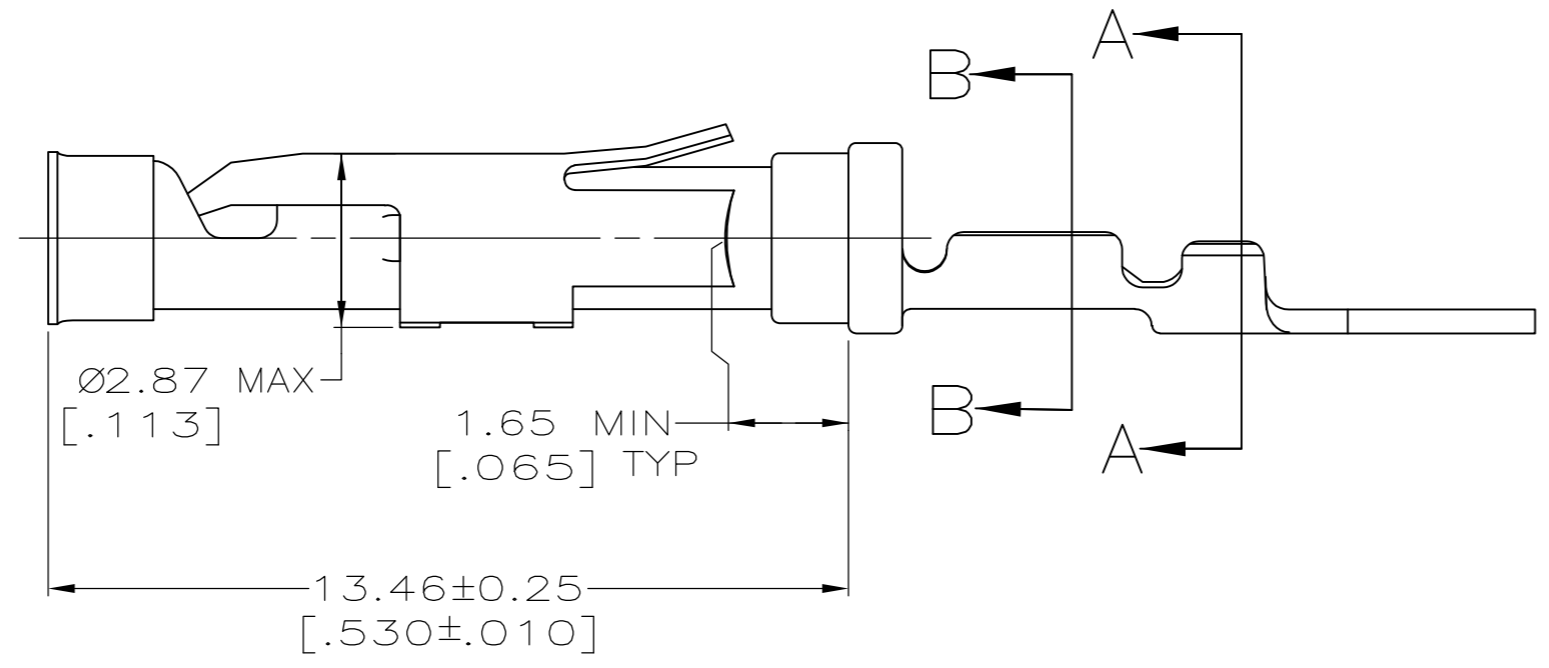
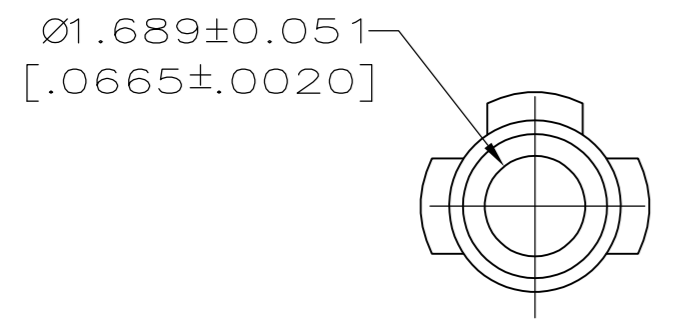


THIS DRAWING IS UNPUBLISHED. RELEASED FOR PUBLICATION  
 © COPYRIGHT - By - ALL RIGHTS RESERVED.

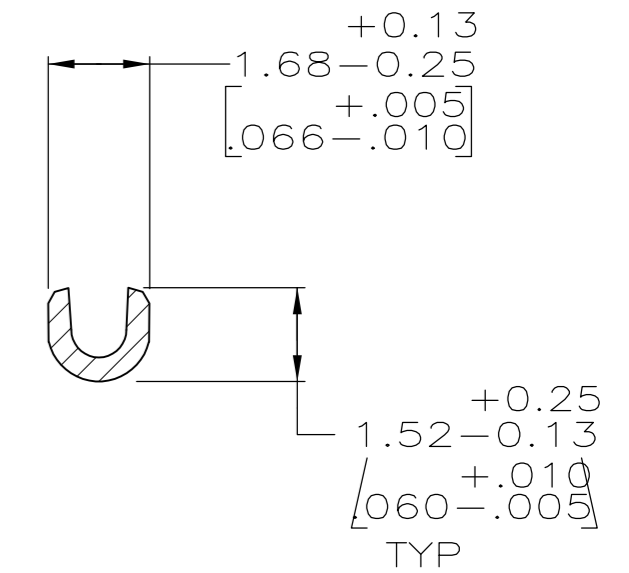
LOC	DIST	REVISIONS			
P	LTR	DESCRIPTION	DATE	DWN	APVD
FT	47	C	REVISED PER ECO-12-012320	04JUL12	KH MZ



DETAIL F  
SCALE 6:1



SECTION B-B



SECTION A-A

- ① 0.76µm [.000030] MIN GOLD PER MIL-G-45204 ON MATING END FOR A LENGTH OF 5.08 [.200] MIN WITH 1.27µm [.000050] MIN MATTE TIN PLATE IN WIRE CRIMP AREA, BOTH OVER 0.76µm [.000030] MIN NICKEL PER QQ-N-290.
- ② GOLD PLATING NEED NOT APPEAR IN THIS AREA .
- ③ REELED FOR MINI-APPLICATOR.
- ④ WIRE RANGE 28-30 AWG.
- ⑤ INSULATION RANGE 3.81 [.015]-7.62 [.030] DIA.
- ⑥ 0.38µm [.000015] MIN GOLD PER MIL-G-45204 ON MATING END FOR A LENGTH OF 5.08 [.200] MIN WITH 1.27µm [.000050] MIN MATTE TIN PLATE IN WIRE CRIMP AREA, BOTH OVER 0.76µm [.000030] MIN NICKEL PER QQ-N-290.

PER DETAIL F	FINISH SOCKET BODY	PART NUMBER
①		788088-3
⑤		788088-2
①		788088-1

THIS DRAWING IS A CONTROLLED DOCUMENT.		DWN C.OBERMAN 21 NOV 96	<b>TE</b> TE Connectivity	
DIMENSIONS: mm [ INCHES ]		CHK R.STONE 22 NOV 96		
TOLERANCES UNLESS OTHERWISE SPECIFIED:		APVD G.STEINHAUER 22 NOV 96	NAME	
0 PLC ± -		PRODUCT SPEC 108-10042	SOCKET ASSEMBLY, .062, TYPE III+	
1 PLC ± -		APPLICATION SPEC 114-10004	SIZE A2	CAGE CODE 00779
2 PLC ± 0.13 [.005]		MATERIAL SEE CALLOUTS	DRAWING NO C=788088	RESTRICTED TO -
3 PLC ± -		FINISH SEE CALLOUTS	SCALE 8:1	SHEET 1 of 1
4 PLC ± -			CUSTOMER DRAWING	REV C
ANGLES ± -				