



# SharpVue HD Video Inspection System

## Futuristic, Innovative and Easy to Use

The SharpVue features an auto focus HD camera with optical magnification of up to 20x or 30x, and digital magnification up to 300x depending on the lens used. The SharpVue produces high quality 1080p HD images without any distortion or delay and with excellent depth of field. The built in LED lights ensures shadow-free illumination even when viewing shiny objects. The SharpVue features a large working distance of 9 inches, ensuring that objects of any size can be inspected. This system is operated with the included wireless remote. Zoom in and out, turn auto focus on or off, insert a cross hair, fine tune your focus, and much more all with a touch of a button.

Includes HDMI and USB outputs. Connect the SharpVue to your computer via USB cable to utilize the included imaging and measurement software.

| Item#            | Description   |
|------------------|---|
| 26700-135        | SharpVue Video Inspection System                                |
| Magnification    | 20x and 30x   |
| Resolution       | 1080p (monitor) / 720p (Computer)                               |
| Zoom             | 20x Optical, 12x Digital  |
| Output           | USB / HDMI  |
| Lighting         | Built-in angled LED   |
| Focus            | Auto/Manual   |
| Image/Video      | With imaging software   |
| Dimensions       | 16.14" x 6.7" x 13.78"  |
| Weight           | 9.9 lbs   |
| Package Contents | Aven Sharpvue system, Imaging Software, wireless remote control |



# SharpVue Video Inspection System

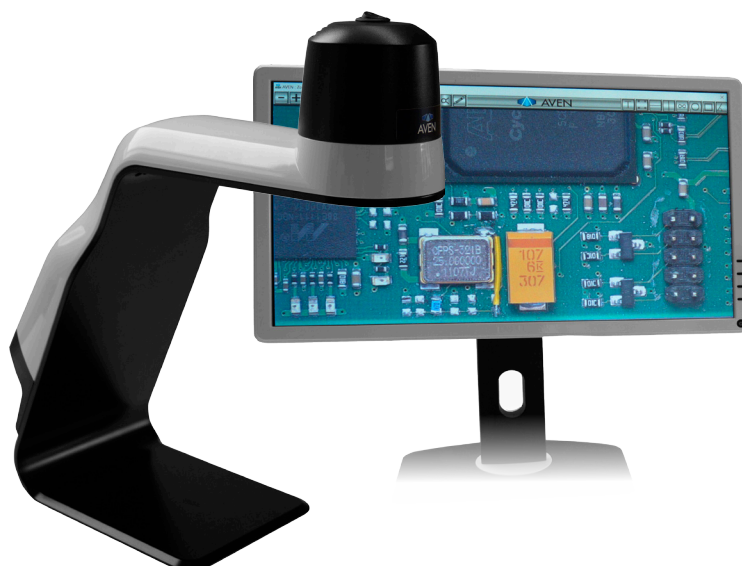
## Modern Design, Ease Of Use

Aven's SharpVue system is designed to inspect, capture images and video, and much more with ease. Adjust your settings with the included easy-to-use remote control.



## Eliminate Eye Strain & Fatigue

The SharpVue offers crystal-clear 1080p imaging, with a magnification of up to 30x optical zoom, 300x Digital zoom. View your images on an HD monitor, eliminating the eye strain and fatigue from frequent microscope use.



## Built-In Features



Built-in LED lights for shadow-free illumination

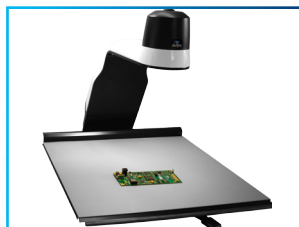


### USB and HDMI outputs.

Connect to your monitor for lag-free 1080p inspection with the HDMI port. Or use the USB port to connect to your PC.

## Premium Accessories

For more information on SharpVue accessories visit [aveninc.com](http://aveninc.com)



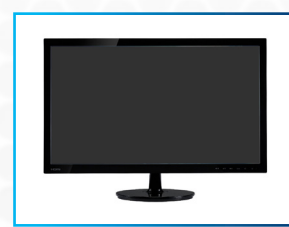
SharpVue X-Y Sliding Table  
Item # 26700-135-XYTB



SharpVue Tilttable Table  
Item # 26700-135-TTB



Image Capture Box  
Item # 26700-401-CB



LCD 1080p HD Monitor  
Item # 26700-406