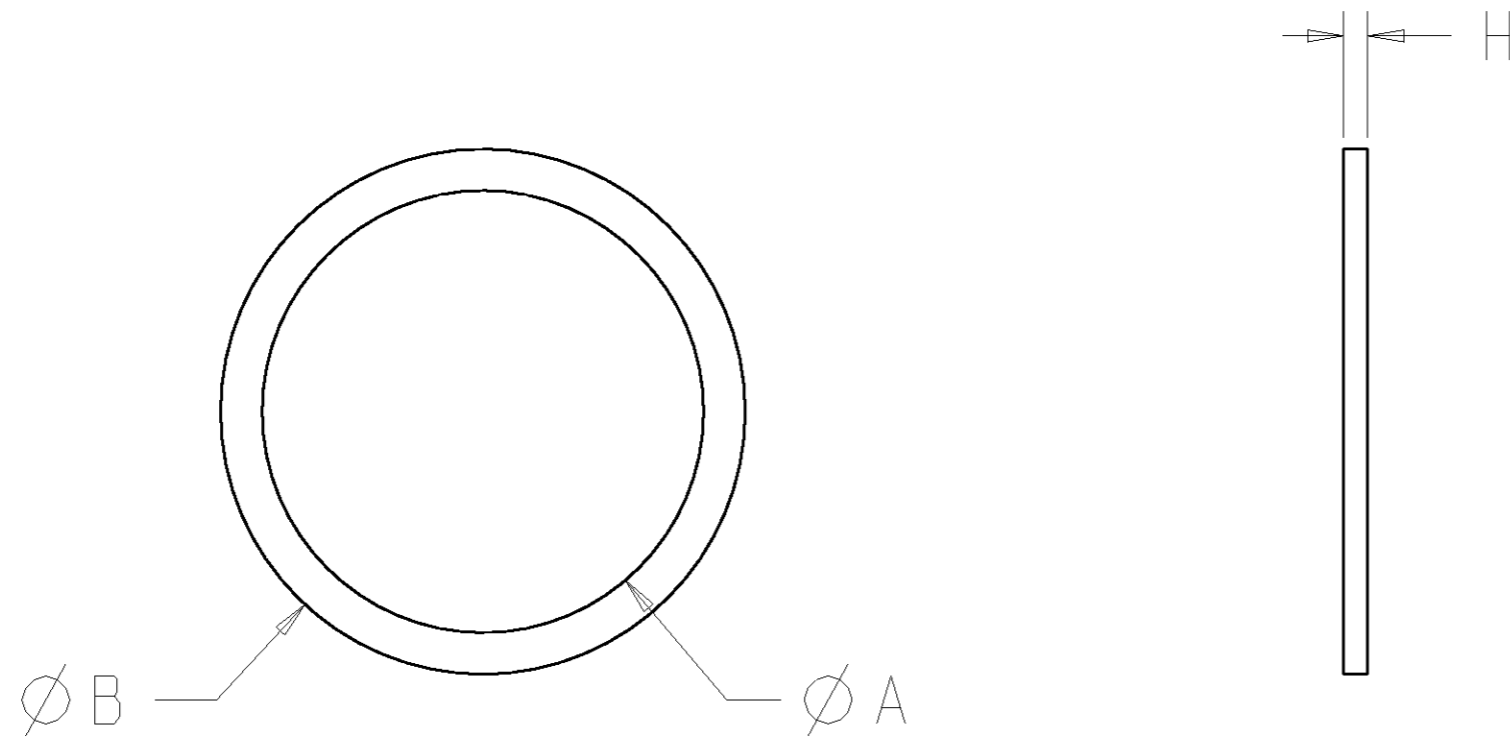


THIS DRAWING IS UNPUBLISHED. RELEASED FOR PUBLICATION  
 BY AMP INCORPORATED. ALL RIGHTS RESERVED.

LOC	DIST	REVISIONS					
FT	0	P	LTR	DESCRIPTION	DATE	DWN	APVD
			O	RLSE PER NPR 5738	-	-	-
			A	REVISED PER EC 063B-0074-99	27-DEC-99	LM	MC



SUPERCEDED by 796258-6

0.420	10	3.2	66	60.5	2"	G54	2"	796255-8
0.270	25	2.7	55	48.5	1 1/2"	-	1 1/2"	796255-7
0.240	25	2.7	51	42.5	1 1/4"	G36	1 1/4"	796255-6
0.190	25	2.2	43	34	1"	G28	1"	796255-5
0.130	25	2.2	34	27.5	3/4"	G22	3/4"	796255-4
0.080	50	1.8	27	21.5	1/2"	G16	1/2"	796255-3
0.060	50	1.8	23	18	3/8"	-	3/8"	796255-2
0.030	50	1.6	17	14	1/4"	-	1/4"	796255-1
Approx. Weight kg/100p	Packaging Unit	H	B	A	Whitworth	CTG	NPT	Part Number
		Height	Outer-Ø	Inner-Ø	Thread	Thread	Thread	

THIS DRAWING IS A CONTROLLED DOCUMENT FOR AMP INCORPORATED. IT IS SUBJECT TO CHANGE AND THE CONTROLLING ENGINEERING ORGANIZATION SHOULD BE CONTACTED FOR THE LATEST REVISION.

DWN	S. WELDON	26MAY99	AMP Incorporated Harrisburg, PA 17105-3608
CHK	D. BIEVENOUR	26MAY99	
APVD	D. BIEVENOUR	26MAY99	
NAME	FLAT SEAL, CONNECTOR BODY		
PRODUCT SPEC	-		RESTRICTED TO
APPLICATION SPEC	-		SIZE
WEIGHT	-		A2
CUSTOMER DRAWING	SCALE		NTS
DRAWING NO		CAGE CODE	DRAWING NO
796255		00779	796255
SHEET		OF	REV
1		1	A