

A*	L	Order no.	Order no.
300	455	FG6-20.300.37	FG6-20.300.54

* Other handle lengths on request

Tube of stainless steel fine ground Tube of aluminium black powder coated

Handle series FG6

Material and surface:
Tube $\varnothing 30 \times 1.5$ mm made of stainless steel, material no. 1.4301; fine ground or aluminium black powder coated. Tube holder and cap made of polyamide PA 6, black with fine structure.

Function element:
Emergency stop with 2 NC and 1 NO contacts.

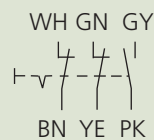
Connecting:
Connecting cable 5 m lead out of the tube holder.

Protection class:
IP 65

Note:
Any other handle lengths and surfaces available on request.

Technical data

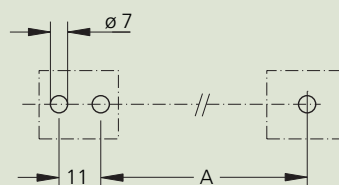
Emergency stop
(2 NC + 1 NO contacts)



Switching voltage

24 V DC
10 mA

Mounting cutout



Door solenoid tumbler see page 304–305.