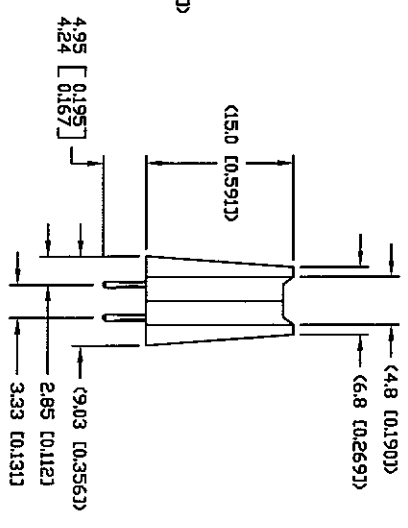
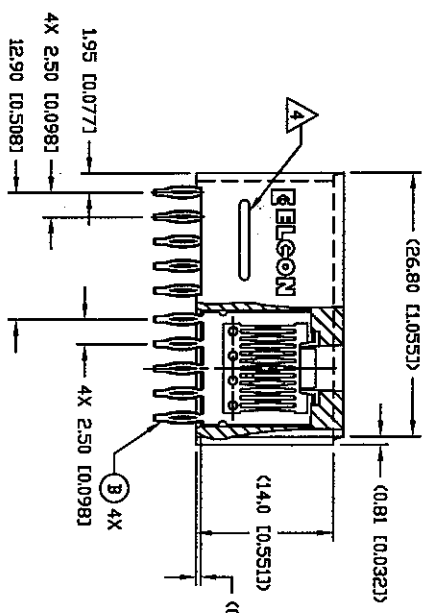
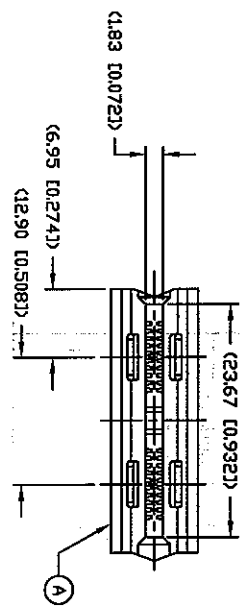


100	DIST	2	1
GP	00		
P	DIR	A	NEW RELEASE
REVISIONS		DATE	REV
DESCRIPTION		20MAR07	RG DO



1. PART NUMBER CHANGES AND OR DESIGN CHANGES AFFECTING ITEM INTERCHANGEABILITY REQUIRE PRIOR ELCON APPROVAL AND AUTHORIZATION BY REVISION TO THIS DRAWING.

2. MATERIALS:
 INSULATOR: THERMOPLASTIC, GLASS REINFORCED, UL94V-0 FLAMMABILITY RATED, COLDR-BLACK
 CROWN HOLDER: COPPER ALLOY
 CROWN BAND: COPPER ALLOY

3. FINISHES:
 CROWN HOLDER: GOLD PLATED, .000030 MIN THICK WITH OVERALL GOLD FLASH
 OVER NICKEL PLATED, .000040 MIN THICK

4. ITEMS PROVIDED TO THIS SPECIFICATION TO BE PERMANENTLY IDENTIFIED PER THE FOLLOWING IDENTIFIER

TYCD PART NUMBER: XXXXXX-X
 DATE CODE (e.g. 0625): YEAR WEEK
 XXXX

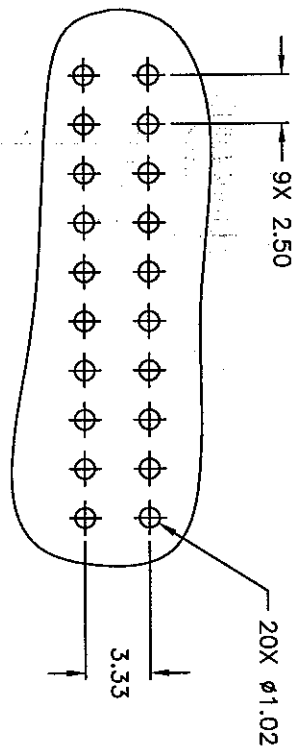
4	1766100-1	SA CROWN BAND HOLDER, STRAIGHT COMPLIANT, HP	B
1	1650630-1	HSG, STRAIGHT, 2 POSN POWER, W/O MOUNTING	A
-1	PART NO.		ITEM

THIS DRAWING IS A CONTROLLED DOCUMENT.		DATE	20MAR07
DIMENSIONS: mm		CHK	RGRZ/BOWSKI
TOLERANCES UNLESS OTHERWISE SPECIFIED:		APP'D	DORRIS
0 P/LC	± .1	20MAR07	
1 P/LC	± .15 [0.12]	NAME	tyco
2 P/LC	± .16 [0.06]	Electronics	
3 P/LC	± .1	Tyco Electronics Corporation	
4 P/LC	± .1	Harrisburg, PA 17105-3808	
FINISH	± .1		

CUSTOMER DRAWING	SIZE	DATE	20MAR07
	A3	Q/C	00779
	DRAWING NO	C=	6651331
SCALE	2:1	SHEET	1 of 2
REV	A	RESTRICTED TO	

THIS DRAWING IS UNPUBLISHED.
 RELEASED FOR PUBLICATION
 BY TYP Electronics Corporation. ALL RIGHTS RESERVED.

Doc	DIST	REVISONS	
GP 00	P	DATE	DRW APPD
	TR		
	SEE SHEET 1		



P.C. BOARD LAYOUT
 COMPONENT SIDE
 SCALE 4:1

THIS DRAWING IS A CONTROLLED DOCUMENT.

DIMENSIONS: mm		TOLERANCES UNLESS OTHERWISE SPECIFIED:	
0 PLG	± .15	0 PLG	± .15
1 PLG	± .15	1 PLG	± .15
2 PLG	± .15	2 PLG	± .15
3 PLG	± .15	3 PLG	± .15
4 PLG	± .15	4 PLG	± .15
5 PLG	± .15	5 PLG	± .15
6 PLG	± .15	6 PLG	± .15
7 PLG	± .15	7 PLG	± .15
8 PLG	± .15	8 PLG	± .15
9 PLG	± .15	9 PLG	± .15
10 PLG	± .15	10 PLG	± .15
11 PLG	± .15	11 PLG	± .15
12 PLG	± .15	12 PLG	± .15
13 PLG	± .15	13 PLG	± .15
14 PLG	± .15	14 PLG	± .15
15 PLG	± .15	15 PLG	± .15
16 PLG	± .15	16 PLG	± .15
17 PLG	± .15	17 PLG	± .15
18 PLG	± .15	18 PLG	± .15
FINISH		FINISH	
-		-	

DRW	20MAR07	DRW	20MAR07
CHK	R.GRZIBOWSKI	CHK	20MAR07
APP'D	D. MORIS	APP'D	20MAR07
DESIGNED BY	STEELKINGER	DESIGNED BY	20MAR07
PRODUCT SPEC		PRODUCT SPEC	
APPLICATION SPEC		APPLICATION SPEC	
WEIGHT		WEIGHT	
CUSTOMER DRAWING		CUSTOMER DRAWING	
SIZE	A3	SIZE	A3
CAGE CODE	00779	CAGE CODE	00779
DRAWING NO	6651331	DRAWING NO	6651331
SCALE	2:1	SCALE	2:1
SHEET	2	SHEET	2
REV	A	REV	A
RESTRICTED TO		RESTRICTED TO	
-		-	

tyco
Electronics
 Tyco Electronics Corporation
 Harrisburg, PA 17105-3608

SOCKET CONNECTOR, STRAIGHT, 2 SEG., 4 PWR
 COMPLIANT TAIL, HOT PLUG
 CROWN EDGE