

# A01 series

## Mushroom head pushbutton switches

Distinctive features and specifications

A01M\_AX1607US



- ❑ Panel Sealed to IP65
- ❑ Single pole to four pole changeover
- ❑ Custom engraving
- ❑ Push on tab terminals
- ❑ 6A 250VAC

### ELECTRICAL SPECIFICATIONS

- **Current/Voltage Rating** : 10mA 5VAC min, 6A 250VAC, 6Amp 12VDC
- **Initial Contact Resistance** : 10mΩ max at 1A 4VDC
- **Insulation Resistance** : 50MΩ min
- **Dielectric Strength** : 750V between open contacts, 5KV live to accessible
- **Electrical Life** : 50,000 cycles min
- **Contact Gap** : >1mm (0.039)
- **Insulation** : Class 2

### MECHANICAL SPECIFICATIONS

- **Mechanical Life (operator)** : Momentary, 1 million cycles, maintained 100,000 cycles
- **Terminals** : Solder/quick connect 2.8mm (0.110)

### GENERAL SPECIFICATIONS

- **Operating Temperature** : -20°C to +55°C
- **Solder Heat Resistance** : 350°C for 5 seconds
- **Sealing** : Panel sealed to IP65, rear of panel IP40

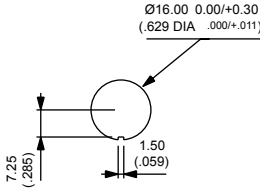
### AGENCY APPROVALS





### MATERIALS

- **Screens** : PC
- **Reflector assembly** : PC
- **Operator** : PBT
- **Nut** : ABS
- **Camtrack Momentary** : PPE
- **Camtrack maintained** : PPSU
- **Switch block 1 & 2 pole** : PBT
- **Switch block 3 & 4 pole** : PEI
- **Contacts** : Gold plated silver

### PANEL CUT OUT



 Dimensions : first dimensions are in mm while inches are shown in brackets. Refer to the following pages for further information.

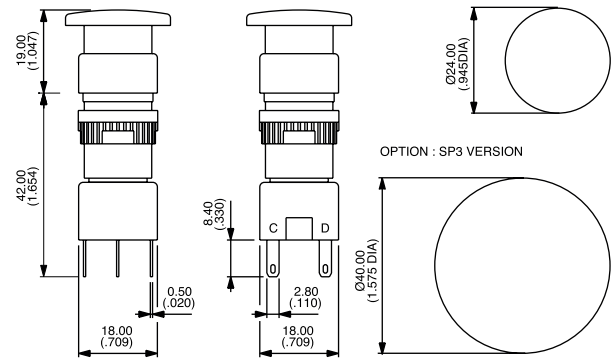
 Mounting accessories : standard hardware 1 nut and 1 sealing washer.

# A01 series

## Mushroom head pushbutton switches

Panel cut-out Ø16 (0.755)

### Pushbutton



### Overview

Ø Actuator	Operator		Switch block	
	Description	Part No	No of poles	Part No
24mm	Black Momentary	A01MMA	Single pole	A0151B
24mm	Red Momentary	A01MMB	Double pole	A0152B
24mm	Yellow Momentary	A01MMD	Three pole	A0155B
24mm	Green Momentary	A01MME	Four pole	A0153B
24mm	Blue Momentary	A01MMF		
24mm	Black Maintained	A01MXA		
24mm	Red Maintained	A01MXB		
24mm	Yellow Maintained	A01MXD		
24mm	Green Maintained	A01MXE		
24mm	Blue Maintained	A01MXF		
40mm	Black Momentary	A01MMA SP3		
40mm	Red Momentary	A01MMB SP3		
40mm	Yellow Momentary	A01MMD SP3		
40mm	Green Momentary	A01MME SP3		
40mm	Blue Momentary	A01MMF SP3		
40mm	Black Maintained	A01MXA SP3		
40mm	Red Maintained	A01MXB SP3		
40mm	Yellow Maintained	A01MXD SP3		
40mm	Green Maintained	A01MXE SP3		
40mm	Blue Maintained	A01MXF SP3		

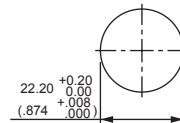
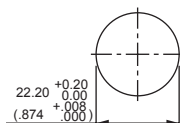
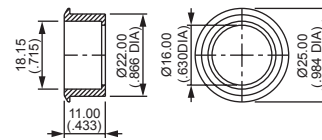
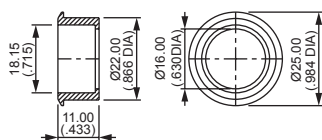
# A01 series

## Mushroom head pushbutton switches

Accessories

### Flush mount bezels

Anodised aluminium/matt black



Round natural anodised : A01FMM

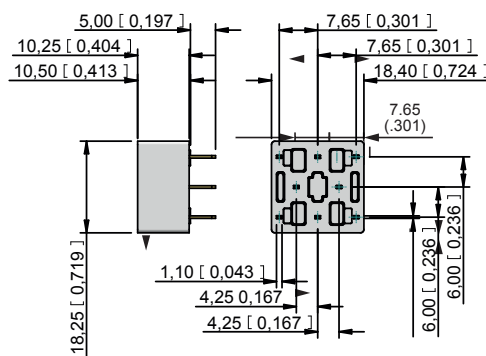
Round matt black : A01FMMG

### PCB Sockets

Number of Poles

Part No.

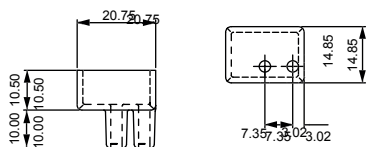
- Single pole, non illuminated : A01PC1
- Double pole, non illuminated : A01PC2
- Single pole, illuminated : A01PC3
- Double pole, illuminated : A01PC4
- Indicator : A01PC5



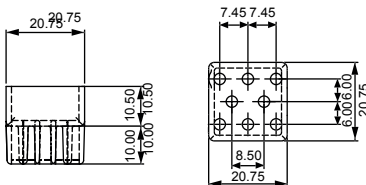
### Terminal guards

Two way

Eight way



Part number A01RTC2



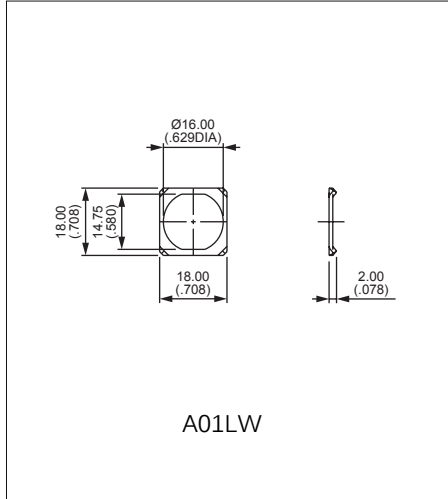
Part number A01RTC8

# A01 series

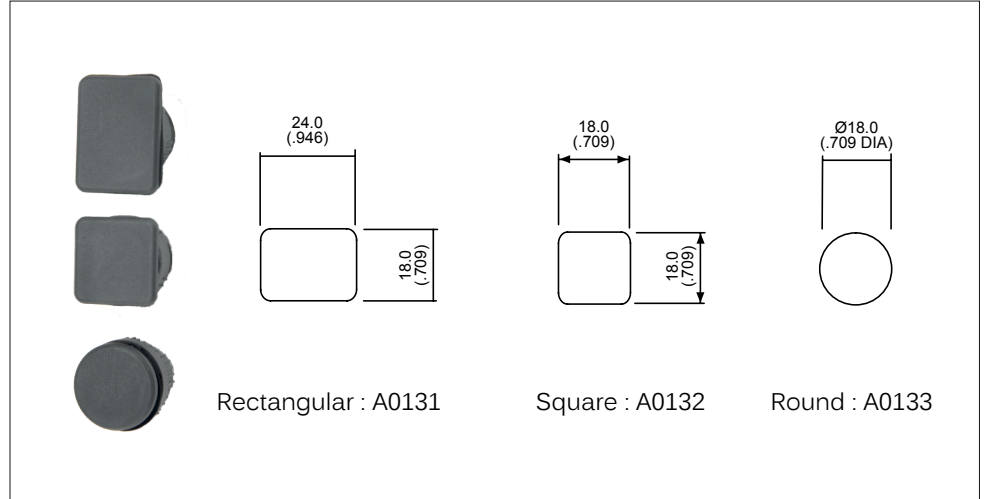
## Mushroom head pushbutton switches

Accessories & tools

### Anti rotation ring



### Blanking plugs



### Tools

