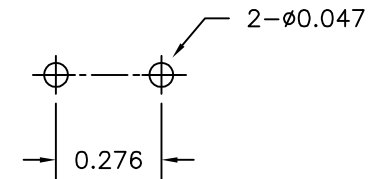
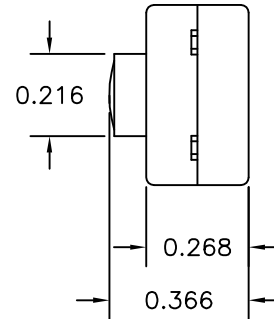
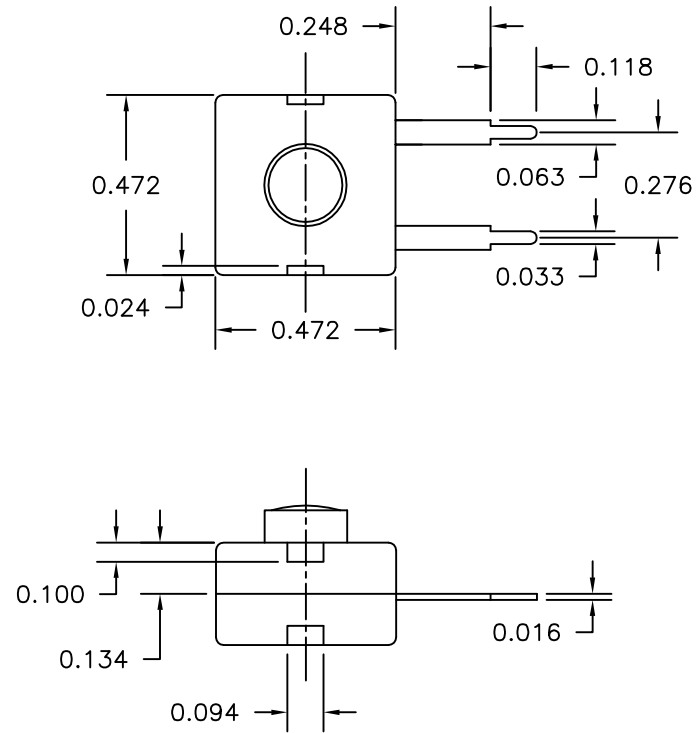


LTR	EN	DESCRIPTION	APPR	BY	DATE
A	-	INITIAL RELEASE	RB	DC	08-11-03
A1	-	CHG'D ELECTRICAL RATING: FROM 300mA TO 500mA	MT	NH	06-14-12
A2	-	REMOVED UL ON THE ELECTRICAL DESCRIPTION	MT	DC	08-27-12

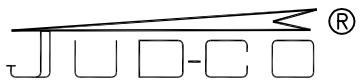


RECOMMENDED MOUNTING PATTERN

JUDCO INVENTORY NO. 50-0014-00
 SWITCH TYPE: PUSH BUTTON, SPST, ON-OFF
 ELECTRICAL RATING: 12 VDC, 500mA

CUSTOMER:

 APPROVED BY: _____
 DATE: _____

DIMENSIONS IN INCHES DIMENSIONS ARE REFERENCE		
	HARBOR CITY CALIFORNIA TITLE J-977 MINI FLAT PAK W/STRAIGHT TERMINALS	
DRAWN: DC	08-11-03	DWG. NO. 1415-439
APPR: KJ	08-11-03	SHEET 1 OF 1
ENG: IS	06-14-12	
1415U439A2.DWG		

This document embodies a product, component, and/or design proprietary to JUDCO MANUFACTURING INC., and which is protected either as a trade secret, by U.S. Patent, or by copyright. It may not be used in any way without written express consent of JUDCO MANUFACTURING INC.