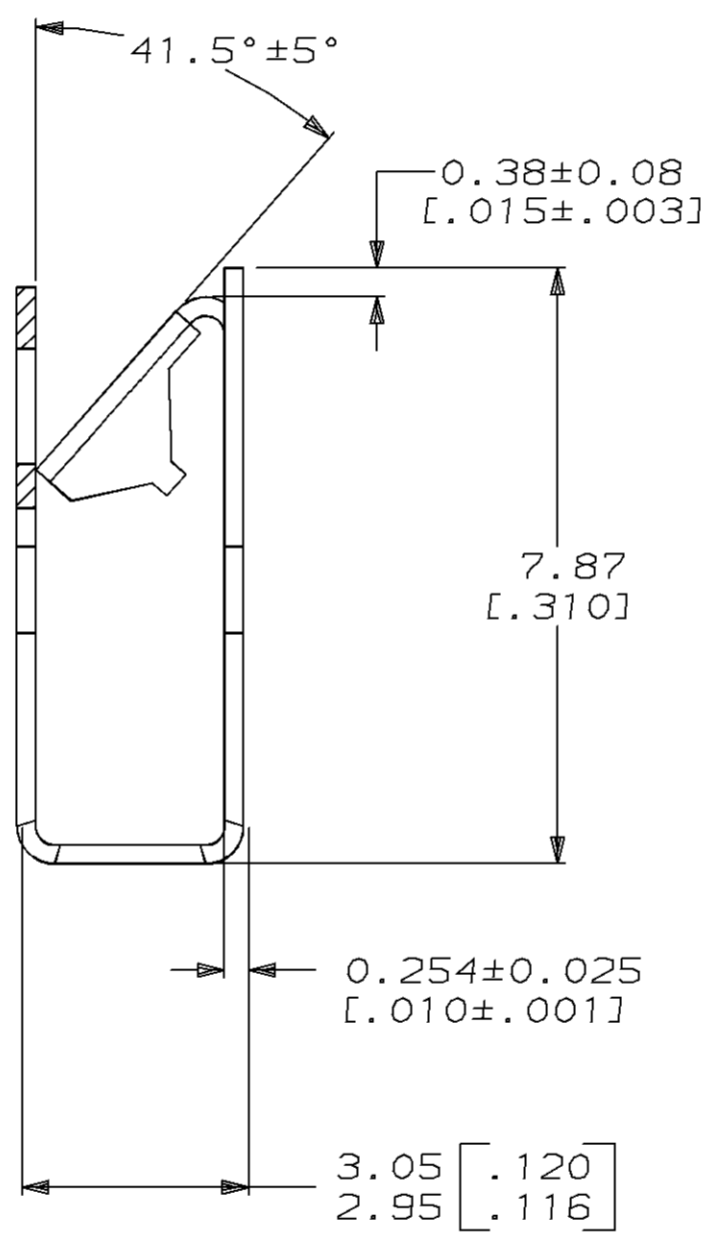
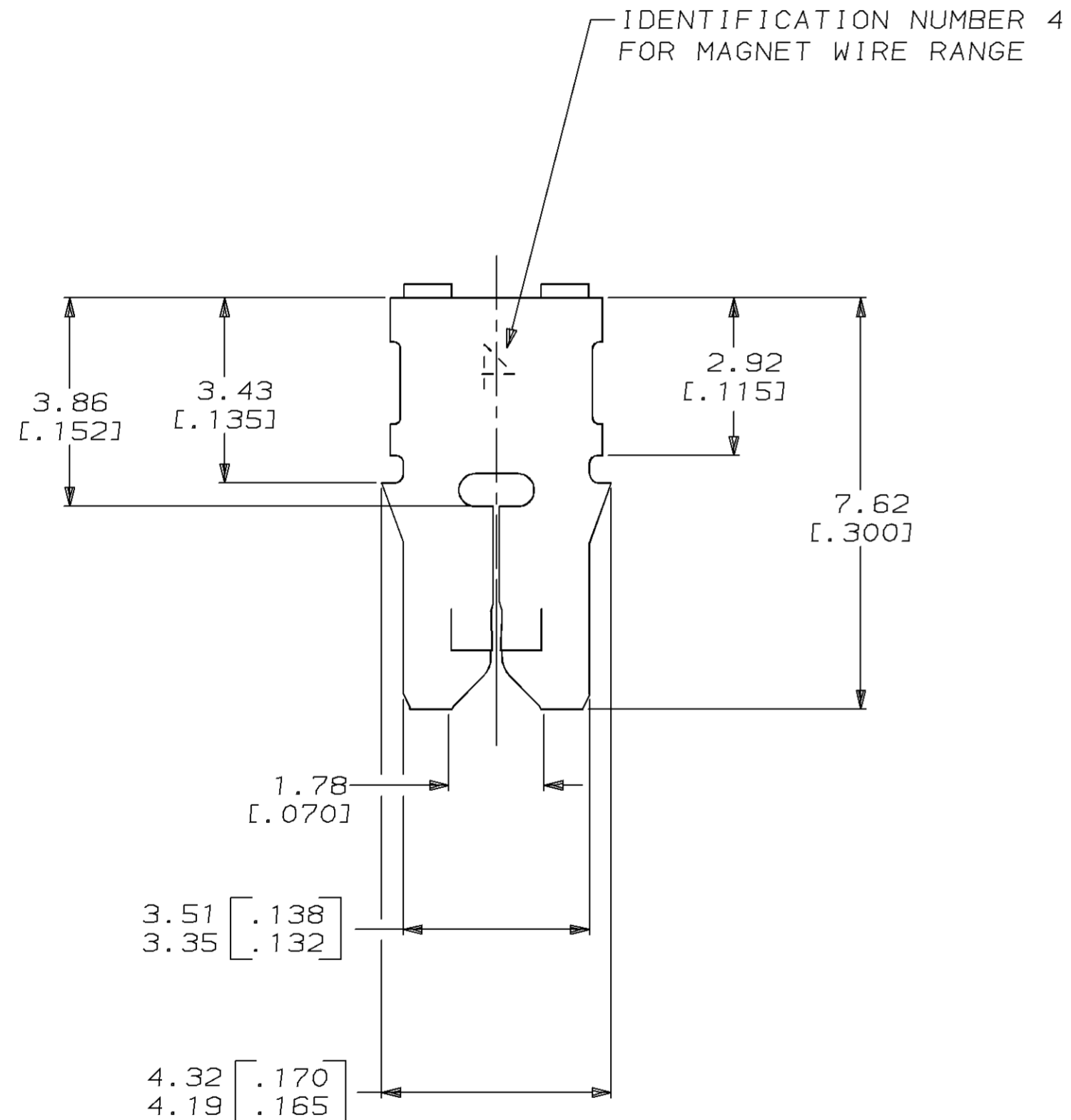
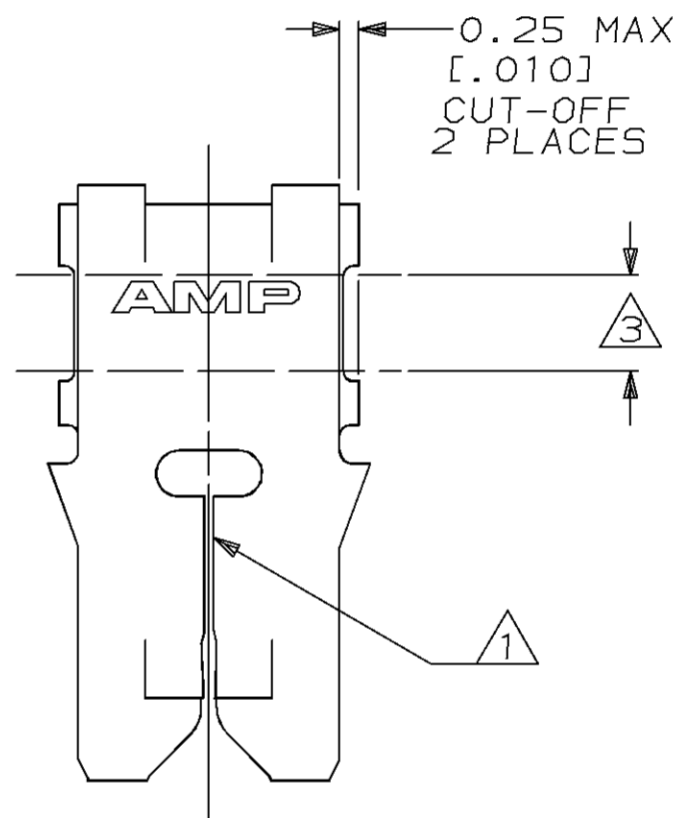
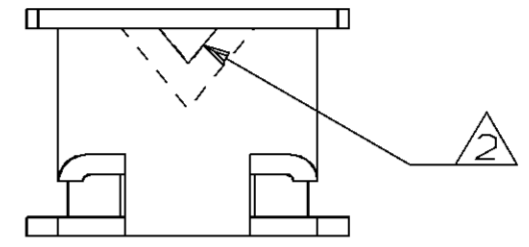


LOC	DIST	P	F	ZONE	LTR	REVISIONS	DATE	APPD
AF	50					0	14/JAN/95	MF/NN
						DESCRIPTION		
						0	DRAWN INTO CAD PER 0710-0568-94	

- ① SLOT ACCEPTS 0.18-0.23mm [#33-#31] AWG COPPER MAGNET WIRE. 2 WIRES OF THE SAME SIZE PER SLOT.
- ② POKE-IN ACCEPTS A 0.50-0.90mm² [#20-#18] AWG SOLID OR FUSED STRANDED LEAD WIRE.
- ③ GREEN COLOR STRIPE APPLIED TO THIS SURFACE DURING LOOSE PIECE OPERATION TO PROVIDE COLOR CODING OF MAGNET WIRE RANGE.



62527-1

PART NO

DO NOT SCALE PRINT. UNLESS SPECIFIED DIMENSIONS IN mm [INCHES] TOLERANCES ON : 2 PLC DEC ± 0.25 [.010] 3 PLC DEC ± - ANGLES ± -	DR 14/JAN/95 MICHAEL S. FEHER
MATERIAL 4M BRASS	CHK 16/JAN/95 JEFF R. RUTH
FINISH 0.002032 [.000080] MIN TIN PER MIL-T-10727	APPD 16/JAN/95 NELSON E. NEFF
	APPD 16/JAN/95 TERRY L. SHUTTER
	PRODUCT SPEC 108-2012
	APPLICATION SPEC 114-2046
	WEIGHT -

AMP AMP Incorporated
Harrisburg, PA 17105-3608

NAME
TERMINAL, POKE-IN,
LOOSE PIECE,
MAG-MATE™

SIZE	CAGE CODE	DRAWING NO
③	00779	③=62527
SCALE	10:1	SHEET
		1 OF 1

THIS DRAWING IS A CONTROLLED DOCUMENT FOR AMP INCORPORATED. IT IS SUBJECT TO CHANGE AND THE CONTROLLING ENGINEERING ORGANIZATION SHOULD BE CONTACTED FOR THE LATEST REVISION.